

**BW**  
BOWYER WICK



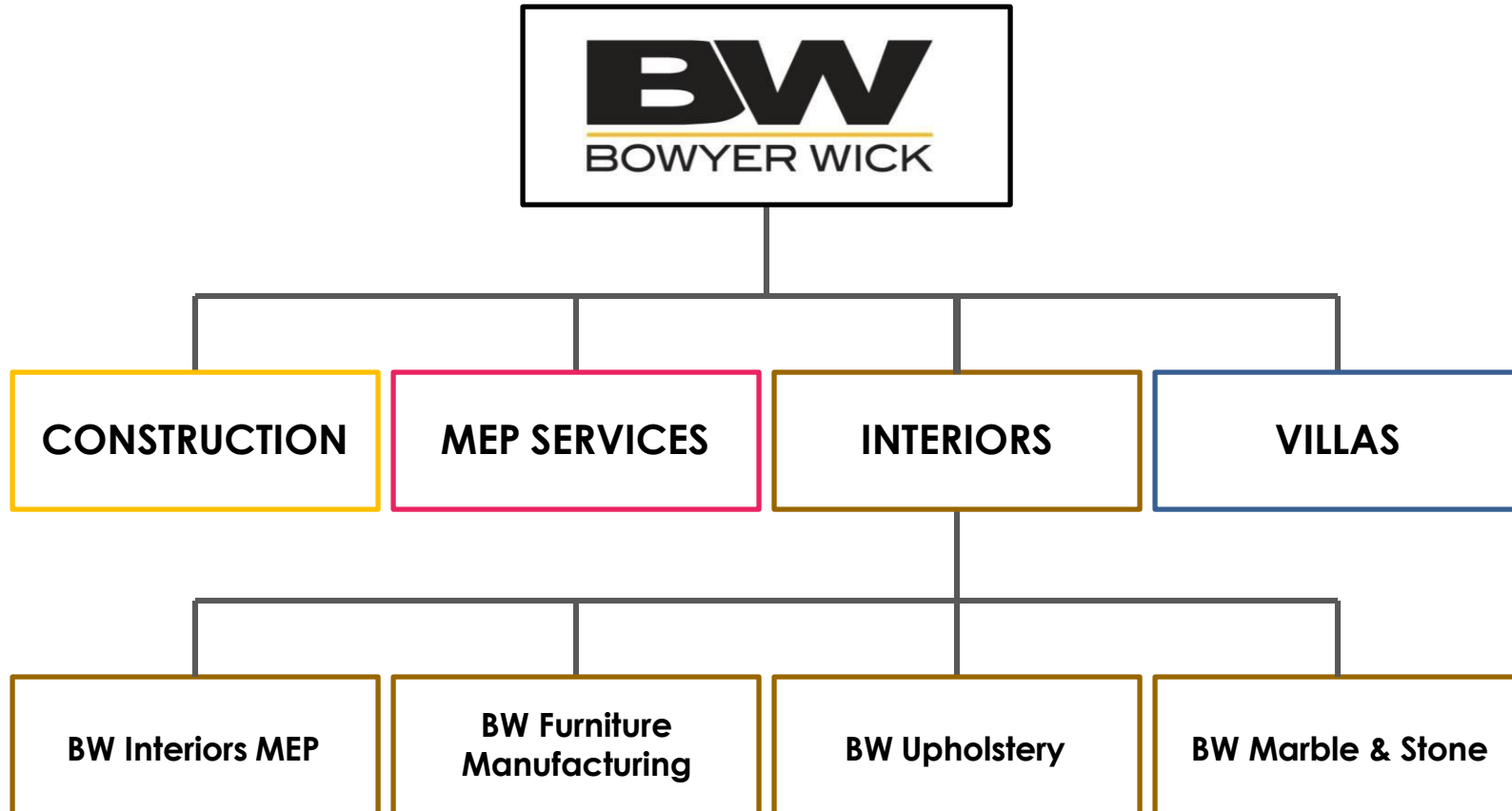
Project Name: 38-C-04-01-01 Residential System - Borealis II  
Phase: Construction of Super Structure - Building Period: No. 01/2022

**Gargash Residential Apartments**

ALBURJ  
MACINTYRE  
BW

**BW**  
BOWYER WICK

# The BW Group of Companies



# History

Paul Bowyer moved out from the UK to the UAE in 1977 and worked for a number of construction companies before founding KMBB in 1989. This was re-registered as AMBB in 1992.

1994 saw the creation of AMBB's in-house electromechanical Division which ensured proper co-ordination of MEP work and a greater ability to foresee and pre-empt problems associated with MEP installations. This division is run by Jayant Bhatia.

In 1999 Paul Bowyer's son-in-law, Andrew Wick, joined AMBB initially as Construction Manager and then as Group Managing Partner.

In 2001 the continued success of AMBB paved the way for the development of an Interiors Division which is now run by Michael Melnick as the Managing Director and Mike Whitworth as the General Manager.

This new division spawned several subdivisions including a marble and stone division run by Mukul Jain with a yard in Hamriyah Free Zone, a 90,000 sq ft purpose-built joinery factory at National Industries Park run by Anas Al Qudah and a second electromechanical division dedicated to interior fit-out projects run by Eliot Lombardozi.

In 2014 it became necessary to establish a new company with a new sponsor, initially registered as AMBB Building Contracting LLC and rebranded in 2016 to Bowyer Wick Building Contracting LLC with Andrew Wick as the CEO.

In recognition of the demand in the market place, a Villas Division was established in 2015 to construct private villas, primarily on a design-and-build basis. This is headed up by Tim Winsor, who has over 25 years of experience within Dubai and the surrounding Emirates.

BW has now successfully completed the construction of many different types of project and has emerged as a unique, family-run contracting company able to offer a very broad range of services to satisfy the most discerning of clients.

# Objectives

Bowyer Wick does not operate like most other contracting companies. We specifically do not want to become so big that we become a 'faceless,' impersonal and unwieldy organization. We have maintained the discipline to resist unconstrained growth and this has enabled us to ensure the manageability of our business. We would prefer to complete a modest amount of work well rather than a large amount of work poorly.

We are choosy about who we work with and for. We avoid highly bureaucratic contracts where there are too many 'managers,' processes, and documents. We recognize that in all projects problems will arise and they need to be addressed expeditiously by people who are prepared to make decisions and take responsibility.

The creation of the many divisions within BW enables us to undertake small to medium-sized projects with a high level of control and reliability. The majority of work we undertake is for clients who select us as their preferred contractor rather than simply finding the cheapest contractor.

# CONSTRUCTION



Sharjah Expo Centre Expansion

**BW**  
BOWYER WICK

**BW**  
BOWYER WICK

**HOTELS &  
APARTMENTS**





**Premier Inn ADNEC Abu Dhabi**



**Premier Inn Silicon Oasis**



**Premier Inn Garhoud**



**Pearl Coast Apartments**



**Tecom Tower**



**Premier Inn DIP**



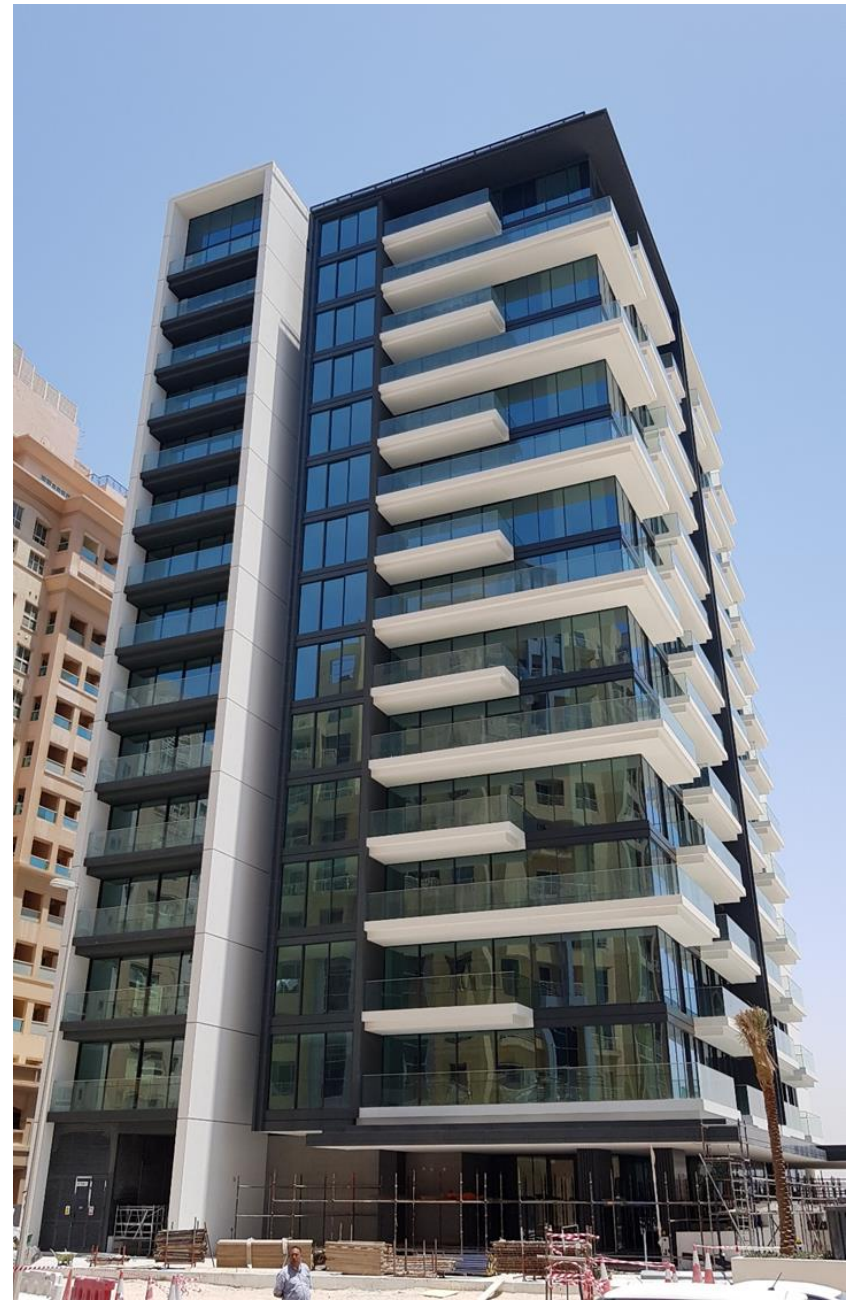
**Palme Couture, Palm Jumeirah**



**Al Badia Apartment Buildings**



**Apartment Building at The Greens, Dubai**



**Apartments at Barsha Heights**





**OFFICES**

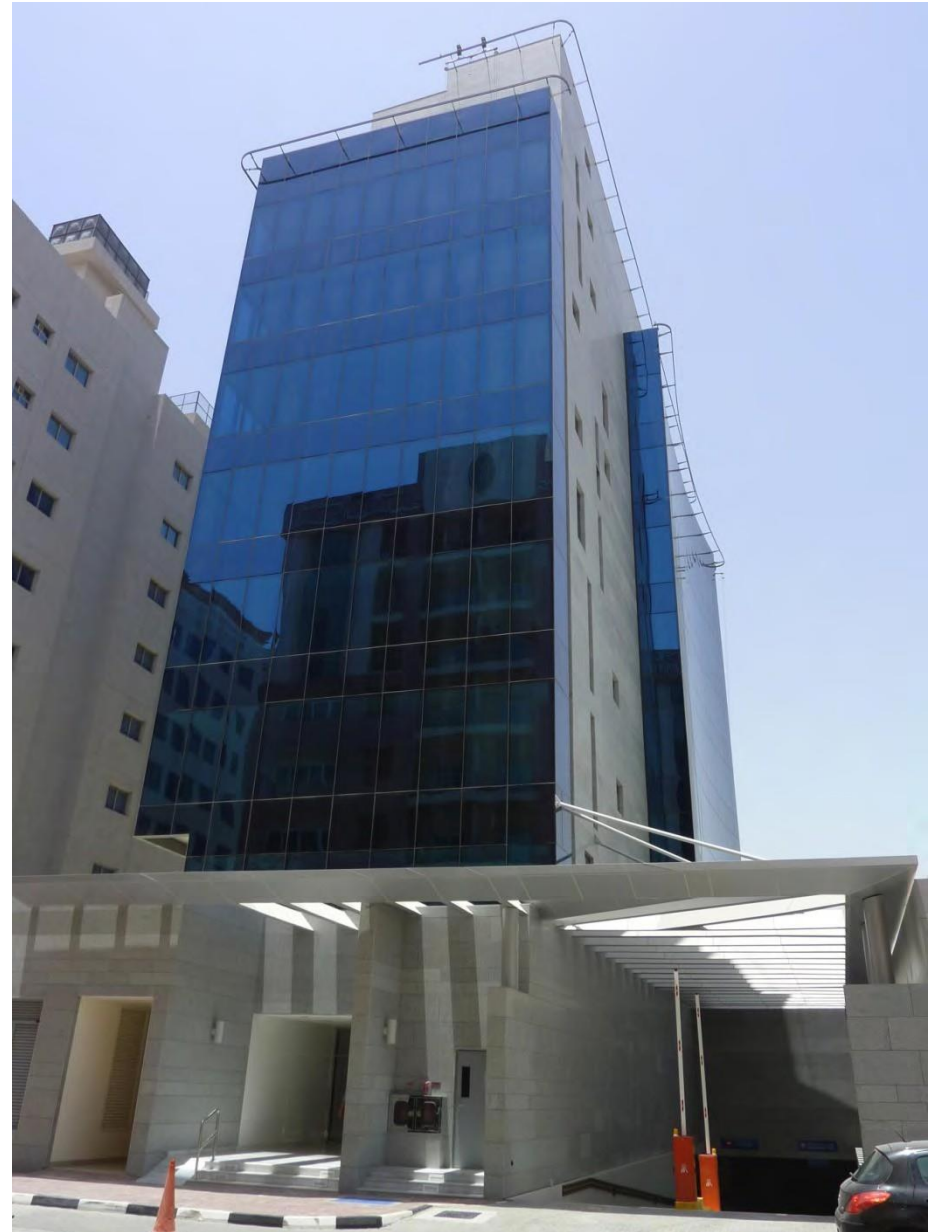




**ICC HQ at Sports City**



**Warehouse Offices at JAFZA**



**Office Building 1, Barsha**



**Office Building 2, Barsha**



**Office Building 3, Barsha**



**Nakheel Sales Centre Offices**



Business School at the American University of Sharjah



**GMC Showroom Sheikh Zayed Rd. Dubai**



**Autotek Mercedes Workshop Dubai**



**Masjid at Nad Al Sheba**



**Mercedes Service Centre Sharjah**



**DHL HQ at Meydan**



**One & Only Staff Accommodation**



**Simulator Building at Silicon Oasis**



**BW Staff Accommodation at DIP**

World Premier Flagship Mercedes Benz Brand Centre, Dubai Design District





**Private Villa**  
Palm Jumeirah, Dubai

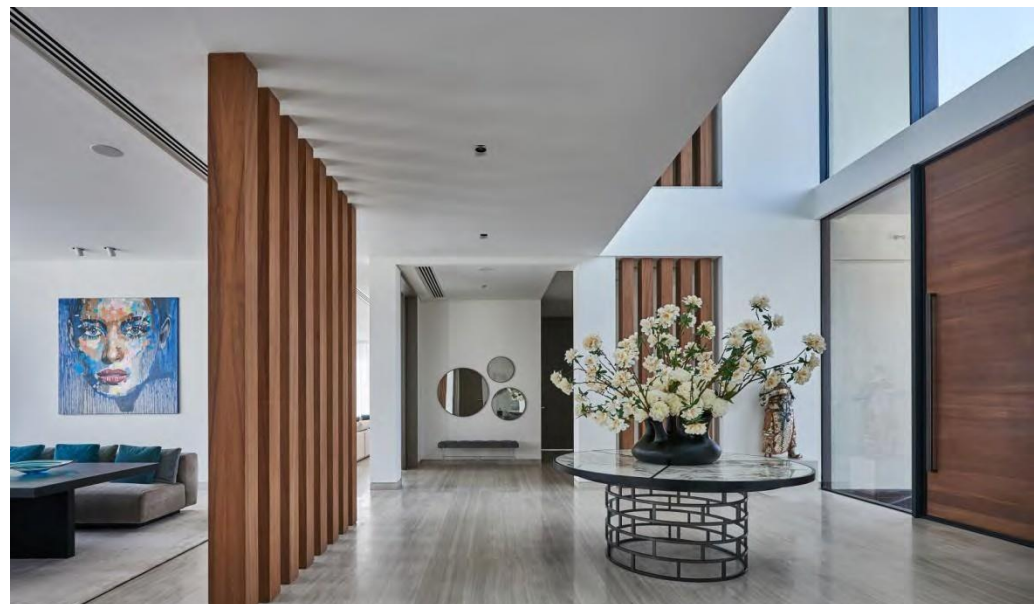


## BW Villas

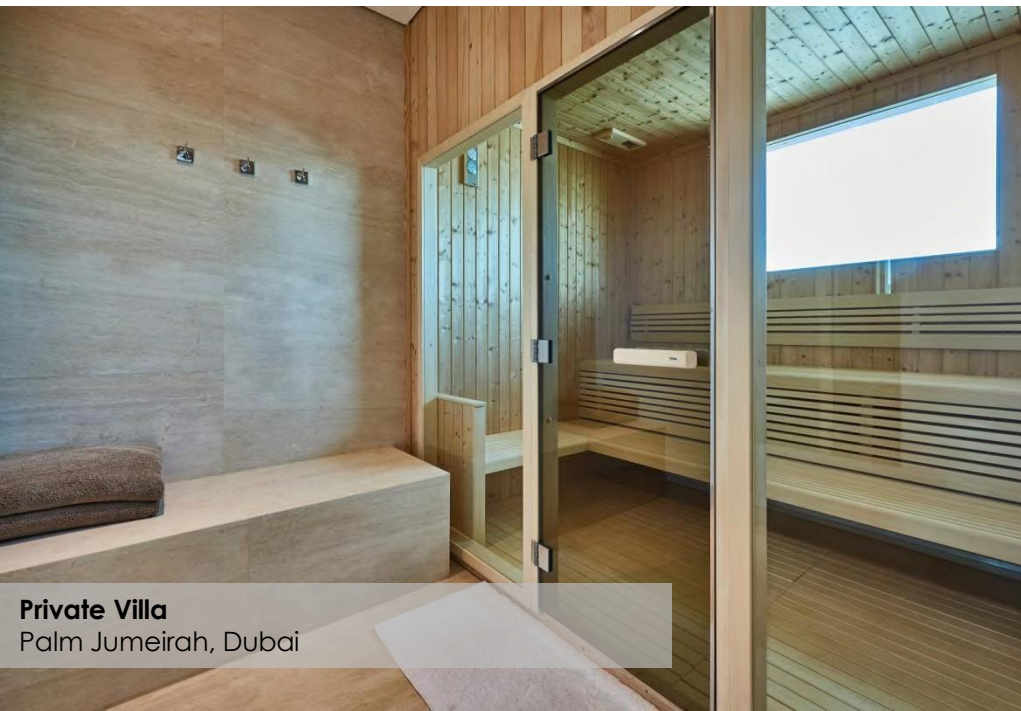
- Bowyer Wick is a well-established, multi-disciplinary contractor with more than three decades of proven track record in the UAE
- We are not too big a company that villas are treated as minor projects where the most junior and least experienced project managers are deployed. Our dedicated Villas division is at the very core of our business and with around 1500 employees we have ample resources to ensure villa projects receive all the attention they deserve
- BW has a unique skill set that makes us ideally suited to build high quality, bespoke villas:
  - ❖ The support of a very experienced and capable construction division with a G + 12 licence.
  - ❖ BW Interiors is considered by many to be the leading Interior fit-out contractor in the UAE having completed hundreds of prestigious projects including some of the most luxurious villas in the region and many iconic, fine-dining restaurants such as Zuma, La Petite Maison, The Arts Club, Nusr-et, Amazonico, Avli, Alici, Il Borro and Flamingo Room to name but a few.
  - ❖ In-house electromechanical divisions that give us much better control of the entire construction process.
  - ❖ Our own, brand new joinery factory at National Industries Park. Again, this is a critical component of any high quality villa project.
  - ❖ Our own marble business with a well-stocked, 100,000 sq ft yard at Hamriyah Free Zone where our clients can peruse at their leisure the many types of marble that add a touch of luxury to their villa.
  - ❖ Successful collaborations with some of the best architects and interior designers in the region and internationally.
  - ❖ Close, long-term working relationships with subcontractors including glazing, gypsum, metal work, swimming pools and landscaping in particular.

Our focus is on quality and timely delivery. Our vision and mission is simple. We do not aim to be the biggest but seek to be the best at what we do. Quality is always prioritised over quantity which is why we are in the enviable position of receiving repeat business from many satisfied clients and are proud to have delivered some of the finest residences in the region.





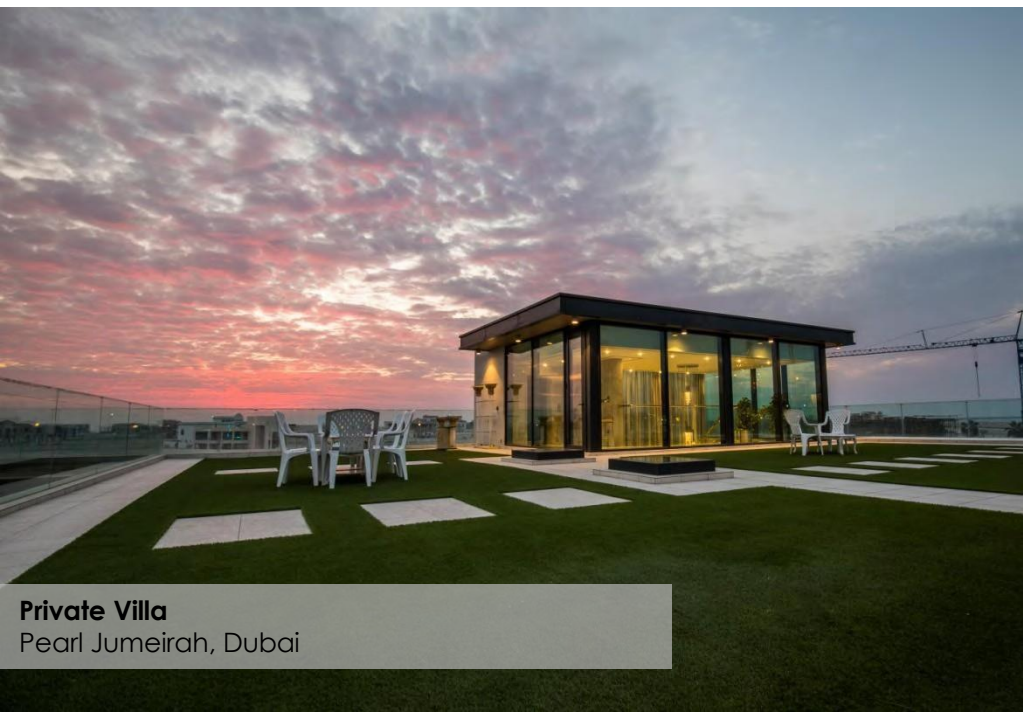
**Private Villa**  
Palm Jumeirah, Dubai



**Private Villa**  
Palm Jumeirah, Dubai



**Private Villa**  
Pearl Jumeirah, Dubai



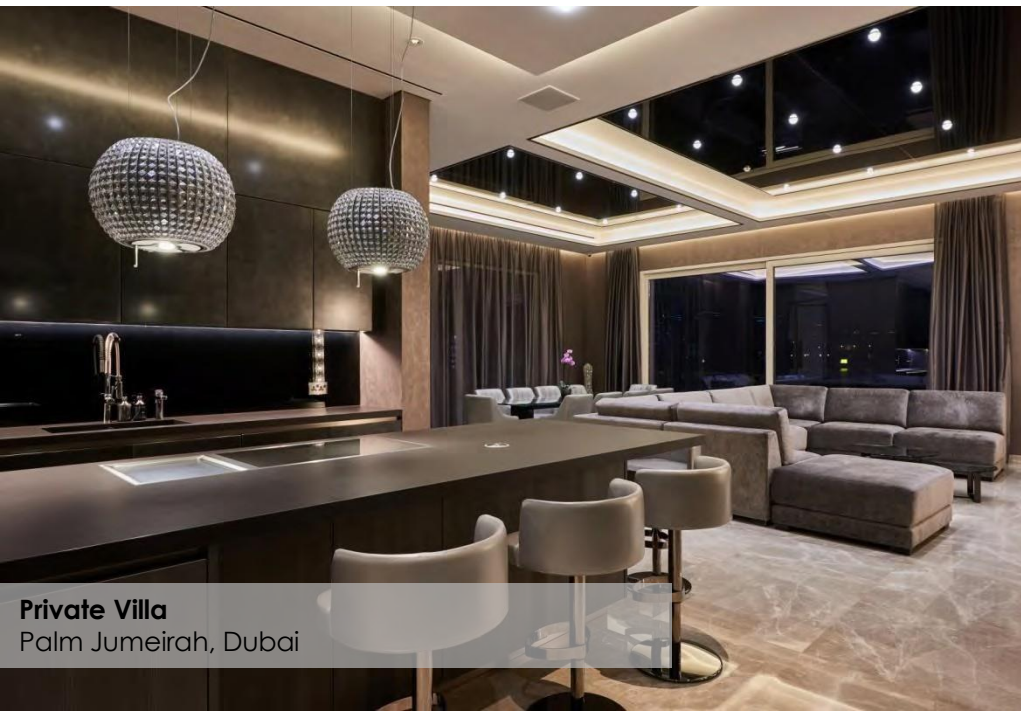
**Private Villa**  
Pearl Jumeirah, Dubai



**Private Villa**  
Pearl Jumeirah, Dubai

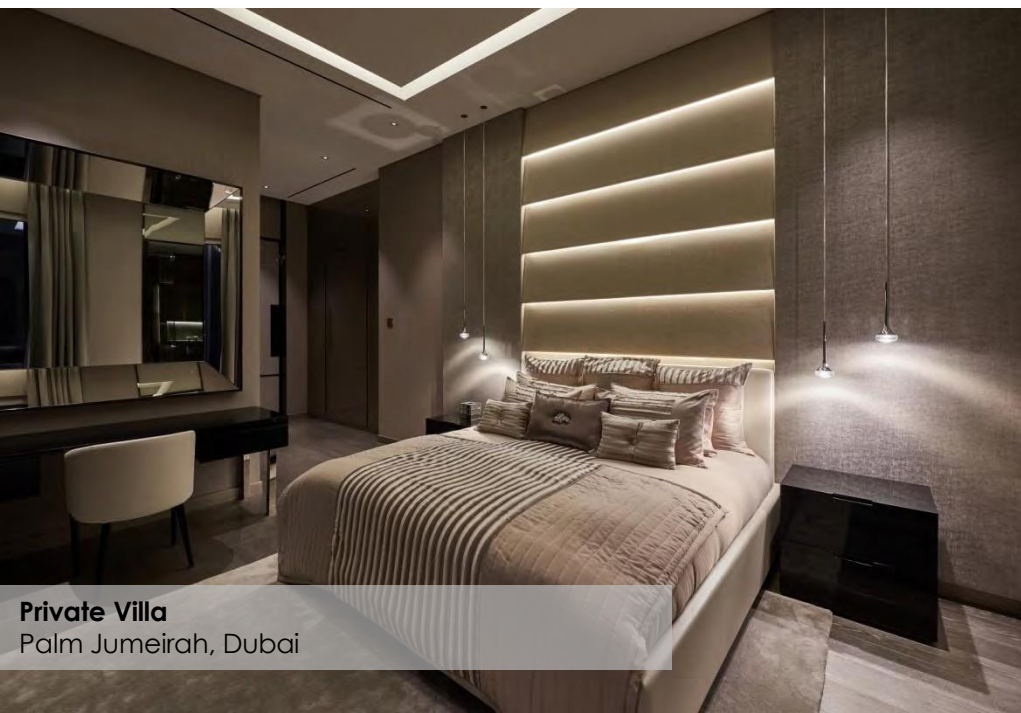


**Private Villa**  
Palm Jumeirah, Dubai

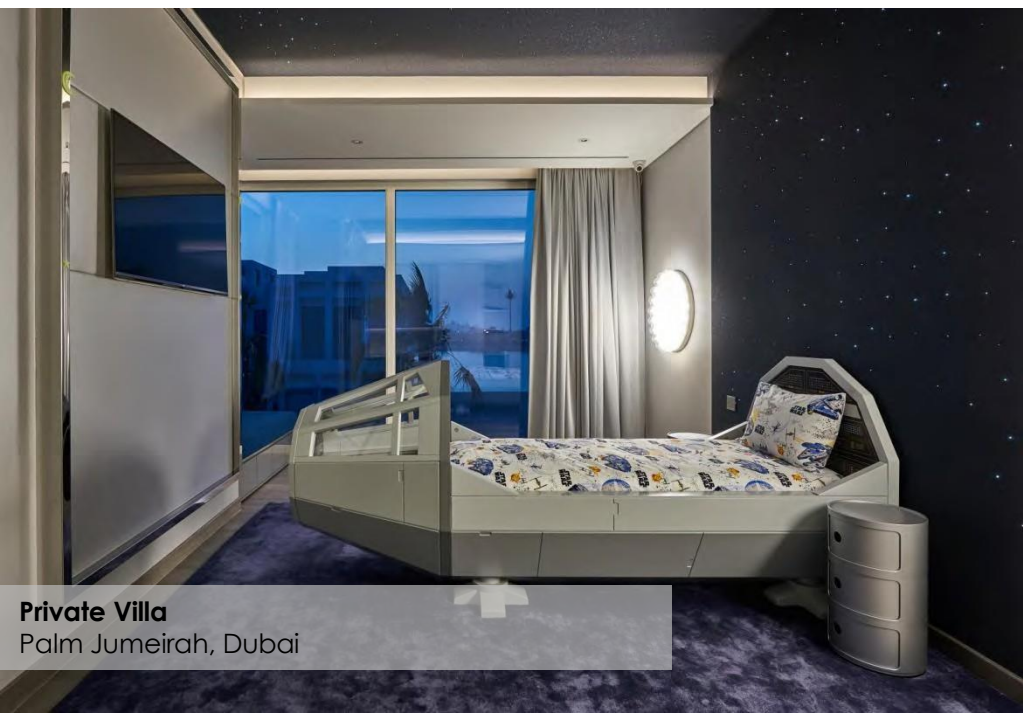


**Private Villa**  
Palm Jumeirah, Dubai





**Private Villa**  
Palm Jumeirah, Dubai



**Private Villa**  
Palm Jumeirah, Dubai



**BW**  
INTERIORS

## BW Interiors

BW Interiors is a well established Interior Fit-out Contractor operating in the GCC Region with offices in Dubai and Abu Dhabi. We have extensive operations in the region and are considered a market leader. This is endorsed by the repeat business we receive as well as the industry awards we have achieved.

We specialise in all types of interior fit out works, some of which are fully LEED certified including hotels, restaurants, corporate offices, banks, airports, retail and commercial projects. In addition we have expanded our production facilities for export of bespoke joinery to Europe and the surrounding regions. Since inception we have focused our efforts on delivering the highest level of service and quality workmanship through our team of dedicated Project Managers and Site Operatives. It is our aim to maintain a manageable level of projects, the focus being on quality rather than quantity.

We are in the enviable position of having our own Marble and Stone, Joinery, Upholstery and Electromechanical, divisions, all underpinned by the ability to produce our own drawings through our respective divisions AutoCAD departments. This enables us to maintain complete control over program execution and quality standards alike.

BW supports local initiatives such as Dubai Special Needs, amongst others and will continue our patronage in the future.

### vision

Our vision is to strive for continuous improvement. Our focus is on client service through ongoing development of our staff and operatives. We believe in developing from within and testament to this is that most of our Project Managers, Site Managers and Foremen have developed from within our own ranks.

We believe this enables us to provide consistency with regards to quality of work and general operating standards.

In conjunction with our in house development strategies we continue to invest in factories and facilities which underpin our ability to provide an industry-leading quality of fit-out to the market.

All of this puts us in a unique position to deliver some of the most iconic projects in the region.

### mission

Our mission is simple. We focus on quality rather than quantity. We want to be the preferred choice of fit-out contractor for prestigious projects so that most of our work is repeat business with satisfied clients and consultants.



# electro mechanical



BW Interiors MEP Division was started with a view to adding value to the overall Interiors Division offering to the market, as well as providing a standalone service to the industry as a whole.

Our aim is to provide the best service to our clients through our qualified management personnel and site operatives alike. We feel strongly that any interior environment is only as good as the level of performance that the building services provide. It is therefore our key focus that all our operatives pay particular attention to the technical requirements and standards that our prestigious clients require. Our philosophy is simple, yet effective; we never compromise on technical standards and apply the highest standards of selection when sourcing materials. This is underpinned by our dedicated management staffs who ensure that all work is carefully inspected and approved for quality and compliance to the project requirements.

We employ fully qualified people who understand our core values and this is evident in the repeat business we obtain from our clients. We offer a full range of MEP services including, design and installation of electrical, HVAC, fire fighting and plumbing services. Our service includes all aspects of implementation of electromechanical works from scheme design all the way through to testing and commissioning as well as production of as-built engineering drawings and operation and maintenance manuals.

We are a dynamic and growing organisation and look to constantly improve our services to the market.

# joinery and upholstery



Established in 2006, BW Furniture Manufacturing has become one of the leading producers of high quality furniture and joinery for the local region and international market.

It is our mission to provide the highest quality of joinery work to satisfy the exacting standards required for the many iconic interior fit-out projects we are proud to deliver. Our commitment has been demonstrated by the substantial investment made in constructing our own, purpose-built factory at National Industries Park in 2020. This is further backed-up by our continuing investment in plant, equipment and manpower. Our ability and reputation for delivering the highest quality product to the market has seen our customer base and turnover to continually grow.

The technical ability of our production team is highlighted by the various completed projects. These include the processing of raw timber through our in-house kiln-drying plant to the selection process of the various timbers and veneers to achieve the final quality article. Our precision Milling Department can deliver either material for bespoke custom pieces or the production of mass produced items as required with capability of CNC routers, and other computerised machinery. The Assembly Section produces the finished items ready for polishing to any level of finish from open grain to high gloss depending on the client's demands, this is achieved with the assistance of our automated spray line and sealed spraying areas for high quality finish. We also have the ability to produce specialised finishes from resin mouldings to gold and silver leaf application.

Our dedicated upholstery department produces bespoke furniture and fabric finishes to the same meticulous standards achieved by our Interiors Division. In particular we supply soft furnishings for hotels, restaurants and luxury villas.

# marble and stone



BW Marble and Stone was established in 2005 and our 100,000 sq ft yard is located in Hamriyah Free Zone, Sharjah. We offer a wide range of marble, granite, limestone and other natural stone materials as well as a range of technical support services. These include identification and supply of suitable materials, samples and production of workshop drawings developed from approved architectural plans. We produce cutting sheets based on these drawings and offer practical advice related to optimum usage of materials and selection of suitable products.

With the use of state-of-the-art water jet and CNC cutting machines our dedicated craftsmen at Hamriyah and our on-site installation teams provide the highest level of workmanship to ensure that all works are delivered to the required standards.

Our approach to projects is to maximise efficiency and quality through our production plant, equipment and qualified personnel using state-of-the-art equipment and utilising our vast depth of knowledge and experience acquired from successful completion of a large number of technically diverse projects. Our commitment and dedication throughout the duration of the project and thereafter, ensure the successful completion of every project.

Put the magnificent finishing touches to your architectural concept with the timeless beauty of natural stone from BW Marble and Stone.

## Food and Beverage



**Flamingo Room by Tashas**  
Jumeirah Al Naseem, Dubai



## Food and Beverage



**ZUMA Restaurant**  
DIFC, Dubai



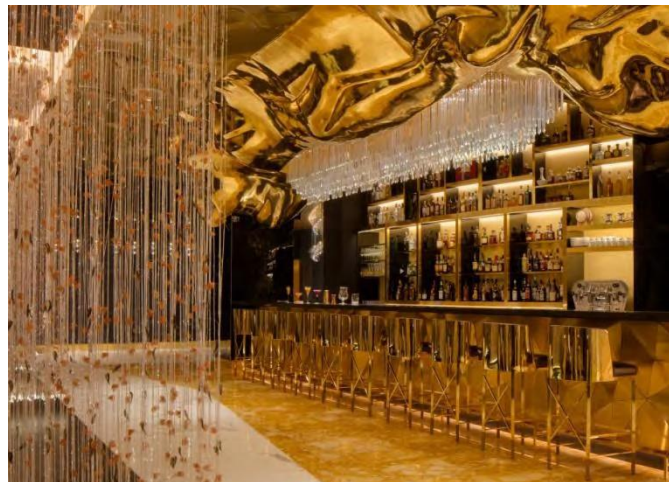
**Mint Leaf of London Dubai**  
DIFC, Dubai



**Gaucho**  
DIFC, Dubai



**Caramel Restaurant and Lounge**  
DIFC, Dubai



**Gold on 27**  
Burj Al Arab, Dubai



**Ruya Turkish Restaurant**  
Grosvenor House, Dubai Marina, Dubai

## Food and Beverage



**Coya Restaurant**  
Four Seasons Resort, JBR, Dubai



**Nusr-Et Steakhouse**  
Four Seasons Resort, JBR, Dubai



**Provocateur Lounge and Club**  
Four Seasons Resort, JBR, Dubai



**The Hub**  
Dubai International Airport Terminal 3, Dubai



**Katana Robata and Sushi Bar**  
The Address Downtown, Dubai



**Salero Tapas and Bodega**  
Kempinski Hotel Mall of the Emirates, Dubai

## Food and Beverage



**Pacha Ibiza Dubai**  
Souk Madinat Jumeirah, Dubai



**Hanaaya Restaurant**  
Mina A Salam, Madinat Jumeirah, Dubai



**Il Borro Tuscan Bistro**  
Jumeirah Al Naseem, Dubai



**The Noodle House Refurbishment**  
Souk Madinat Jumeirah, Dubai



**Morah Dubai**  
JW Marriott Marquis, Business Bay, Dubai



**Weslodge Saloon**  
JW Marriott Marquis, Business Bay, Dubai

## Food and Beverage



**The Irish Village**  
Riverland, Dubai Parks & Resorts, Dubai



**Tashas Café**  
The Outlet Village, Dubai Parks & Resorts, Dubai



**Coya Restaurant**  
The Galleria, Al Maryah Island, Abu Dhabi



**Nusr-Et Steakhouse**  
The Galleria, Al Maryah Island, Abu Dhabi



**La Petite Maison**  
The Galleria, Al Maryah Island, Abu Dhabi



**ZUMA Restaurant**  
The Galleria, Al Maryah Island, Abu Dhabi

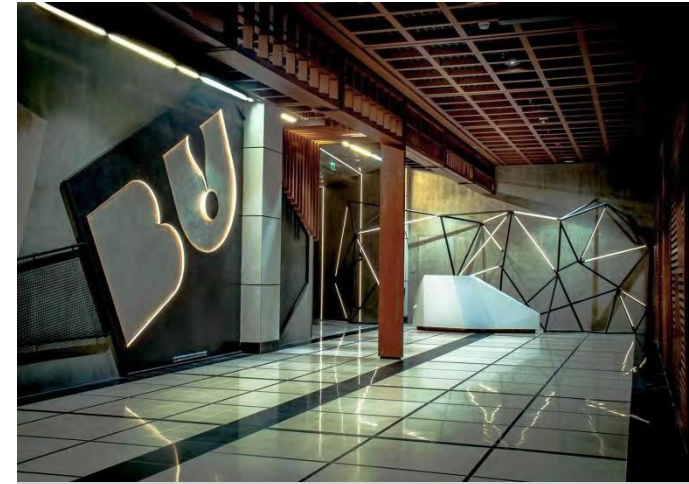
## Food and Beverage



**Finz Seafood Restaurant**  
Beach Rotana Tourist Club Area, Abu Dhabi



**Dai Pai Dong**  
Rosewood Hotel, Al Maryah Island, Abu Dhabi



**BU! Trinity**  
The World Trade Centre Mall, Abu Dhabi



**Café D'Alsace**  
Yas Marina Island, Abu Dhabi



**Switch Restaurant and Lounge**  
Wharf Al Bateen, Abu Dhabi



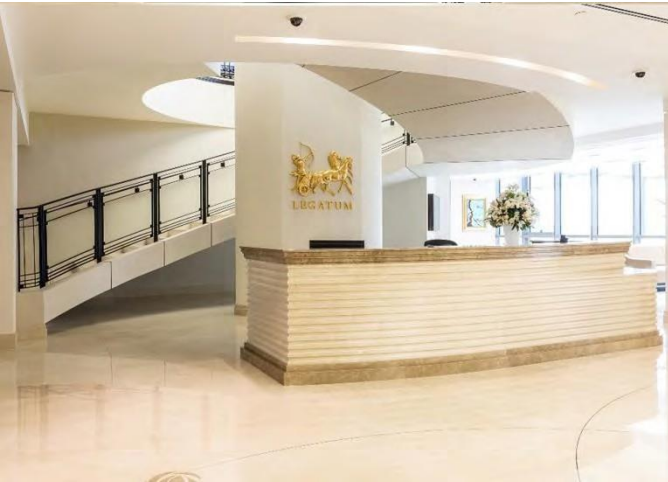
**Tashas Café**  
Al Bateen, Abu Dhabi

# Corporate Offices



**Oracle Offices**  
The Edge Building, Dubai Internet City, Dubai

## Corporate Offices



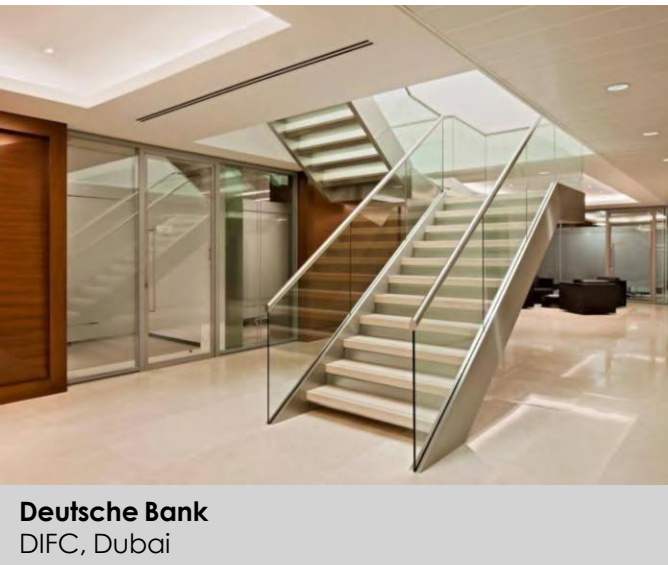
**Legatum Offices**  
DIFC, Dubai



**Linklaters Offices**  
DIFC, Dubai



**Oman Trading International Offices**  
DIFC, Dubai



**Deutsche Bank**  
DIFC, Dubai



**Barclay's Wealth Offices**  
DIFC, Dubai



**Bloomberg Offices**  
DIFC, Dubai

# Corporate Offices



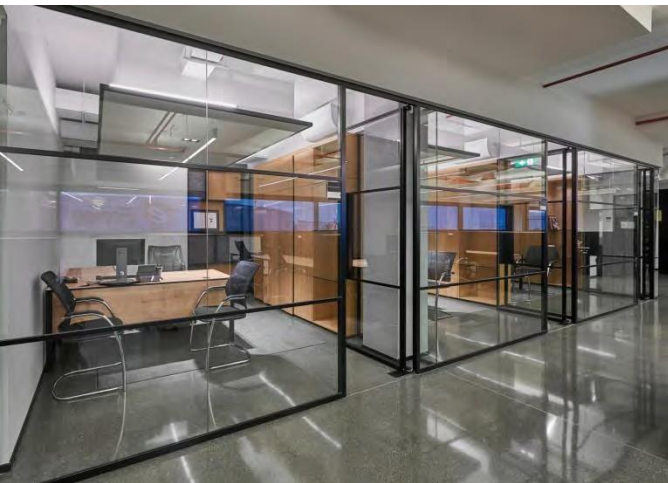
**Index Tower Offices**  
DIFC, Dubai



**Samena Capital Offices**  
DIFC, Dubai



**Dubai Chamber Executive Offices**  
Deira, Dubai



**Richemont Operations Centre**  
DAFZA, Dubai



**British American Tobacco Offices**  
JLT, Dubai



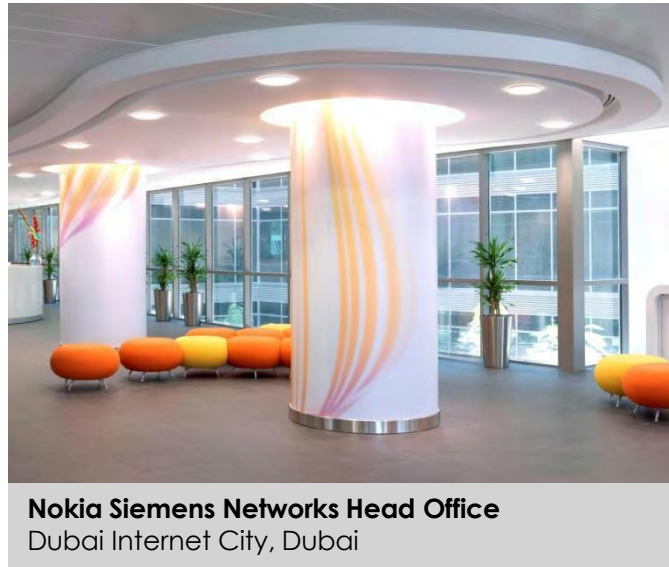
**D3 Pocket Park**  
Dubai Design District, Dubai



## Corporate Offices



**BP Middle East Offices**  
Downtown Burj Khalifa, Dubai



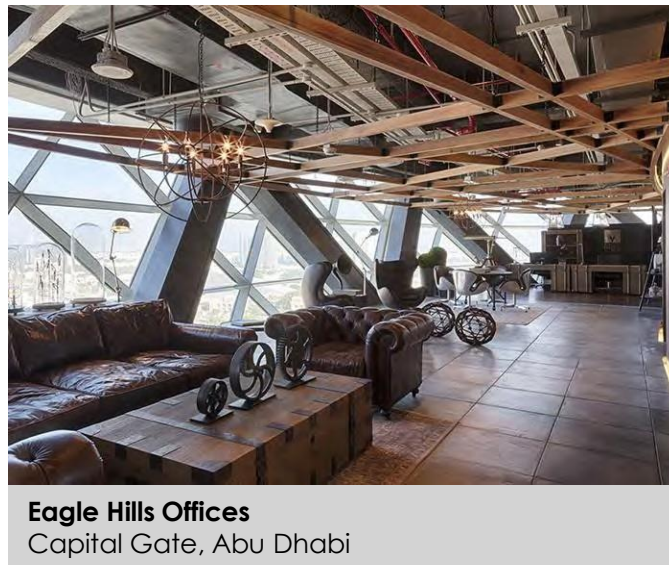
**Nokia Siemens Networks Head Office**  
Dubai Internet City, Dubai



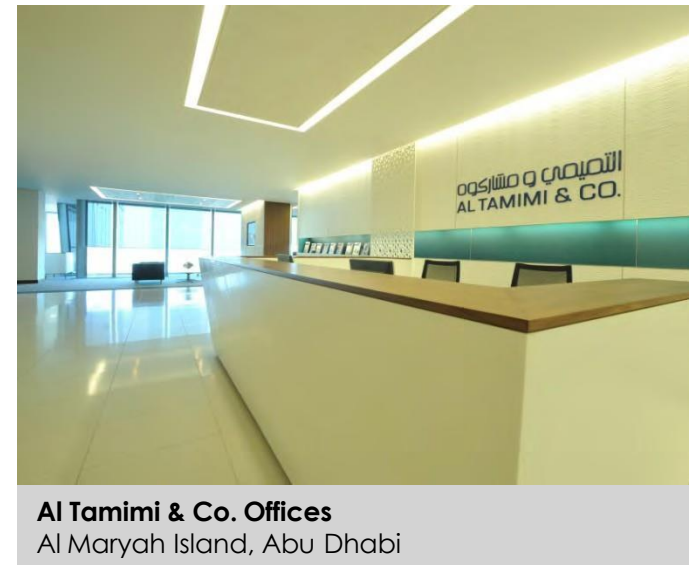
**HSBC Offices**  
Dubai Internet City, Dubai



**HSBC Offices**  
Etihad Towers Corniche, Abu Dhabi



**Eagle Hills Offices**  
Capital Gate, Abu Dhabi



**Al Tamimi & Co. Offices**  
Al Maryah Island, Abu Dhabi

## Hotels, Spas, and Fitness Centre



**Shangri-La Hotel Public Areas Refurbishment**  
Sheikh Zayed Road, Dubai

# Hotels, Spas, and Fitness Facility



**Media One Hotel Refurbishment**  
Dubai Media City, Dubai



**Kempinski Hotel Refurbishment**  
The Mall of The Emirates, Dubai



**The Ritz-Carlton Hotel Refurbishment**  
JBR, Dubai



**Grand Hyatt Dubai Hotel Refurbishment**  
Dubai Healthcare City, Dubai



**The H Hotel Refurbishment**  
Sheikh Zayed Road, Dubai



**Double Tree by Hilton Hotel**  
JBR, Dubai

## Hotels, Spas, and Fitness Facility



**Flora Creek Hotel Apartments Refurbishment**  
Port Saeed, Deira, Dubai



**Flora Park Hotel Apartments Refurbishment**  
Port Saeed, Deira, Dubai



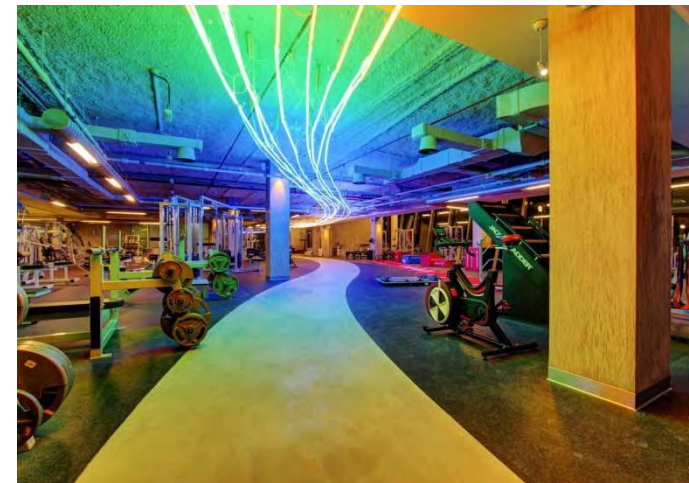
**Renaissance Hotel**  
Deira, Dubai



**Natural Elements Spa and Fitness**  
Le Meridien Hotel, Al Garhoud, Dubai



**Talise Spa**  
Jumeirah Beach Hotel, Dubai

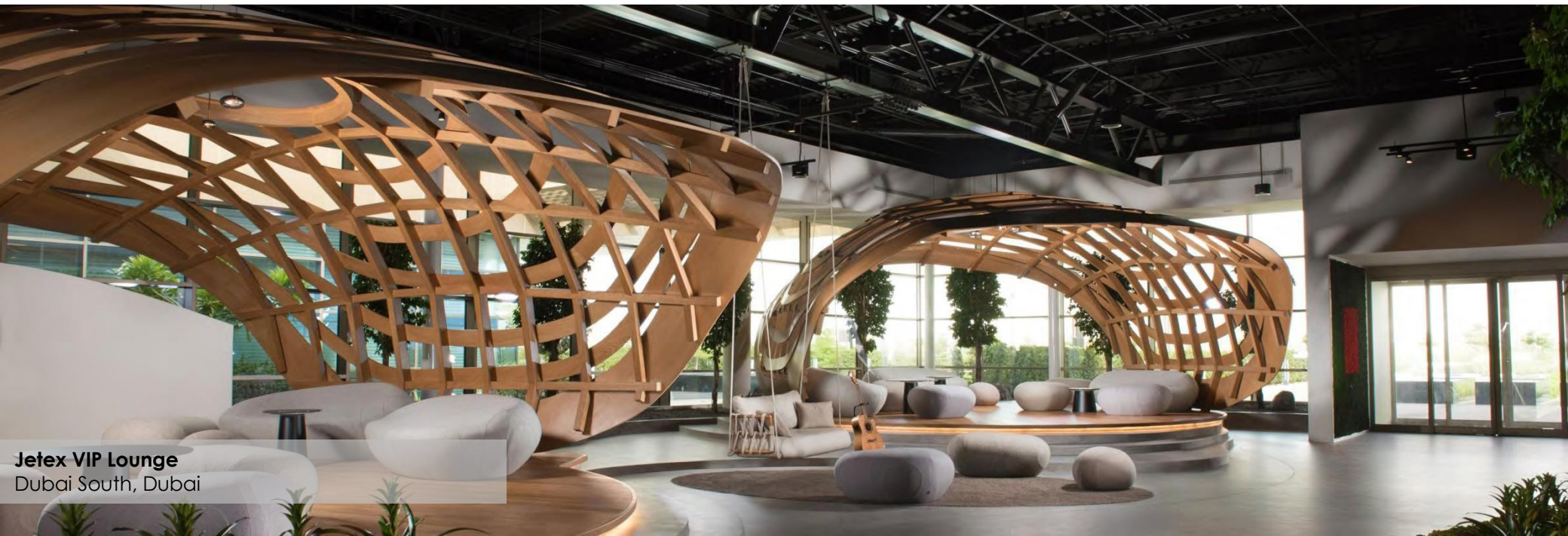


**Fit Republik**  
Dubai Sports City, Dubai

# Airport



**Jetex Executive Lounge**  
Dubai South, Dubai



**Jetex VIP Lounge**  
Dubai South, Dubai

# Healthcare



**City Centre Clinic nka. Mediclinic Deira**  
Deira City Centre, Dubai



**Harvard Medical School nka. MBR AMC**  
Dubai Healthcare City, Dubai

# Retail



## Retail



**Sprungli Boutique and Café**  
Dubai Mall and The Galleria Mall Abu Dhabi



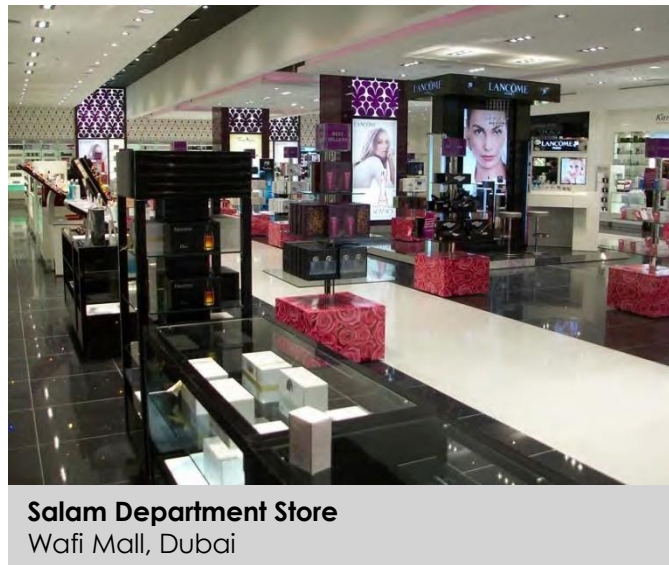
**Tiffany & Co.**  
Dubai Mall, Dubai



**Tiffany & Co.**  
The Mall of the Emirates, Dubai



**Caboodle Pamper and Play**  
The Galleria, Al Maryah Island, Abu Dhabi



**Salam Department Store**  
Wafi Mall, Dubai



**Nike**  
Marina Mall, Dubai